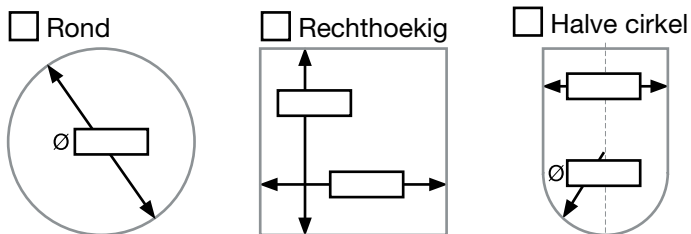


Klant: _____
 Project: _____
 Adres: _____

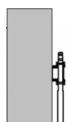
Bedrijfsnaam: _____
 Ordernr.: _____
 Datum: _____

1 Formaat en ontwerp

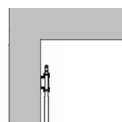


Gelieve alle afmetingen in te vullen in mm

2 Installatie omstandigheden



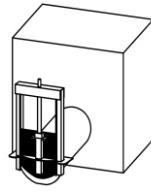
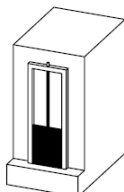
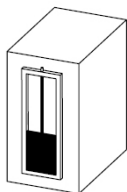
Open



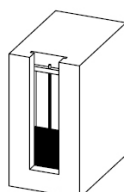
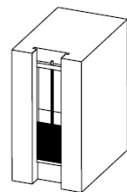
Gesloten kamer

3 Installatie

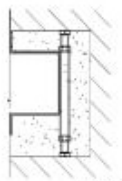
- Zidelings & bodem vastankeren Zidelings vastankeren & bodem inbetonneren Monteren op flens (EN1092-2)



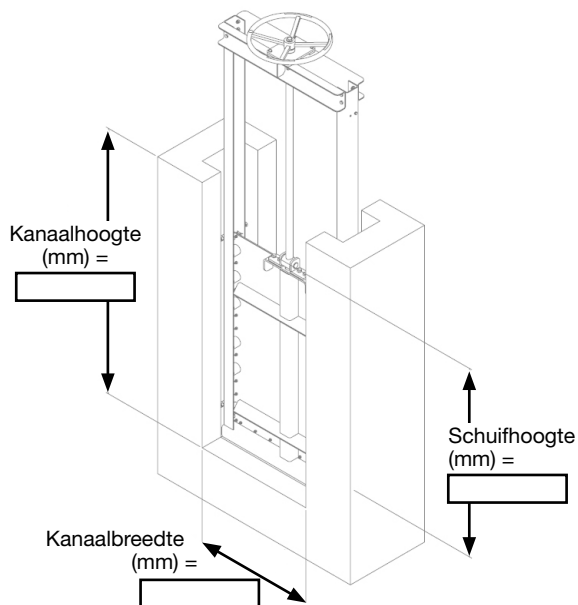
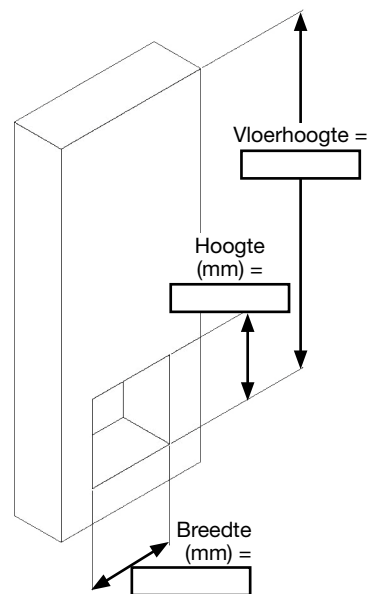
- Zidelings inbetonneren* & bodem vastankeren Zidelings & bodem inbetonneren*



- * Optioneel:
 Positioneerbeugel voor zidelings inbetonneren



4 Afmetingen en druk



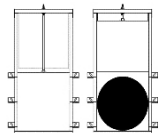
Waterdruk voorzijde (mwk): _____

Waterdruk achterzijde (mwk): _____

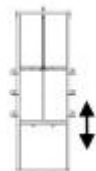
Werkdruk bij normale bediening: _____

5 Functie

Open - dicht



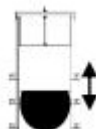
Overstort-type



Begrensd



Regelbedrijf



6 Materialen

Kader en schuif:

Roestvast staal SS304

Roestvast staal SS316Ti

Ander: _____

Dichting:

EPDM

NBR

Andere: _____

7 Bediening

Manueel:

Spindelkop, vierkant: _____ mm

Handwiel

Elektrisch:

• Beschikbaar voltage: _____

Aantal fasen: _____

• Maximaal vermogen: _____ kW

Pneumatisch

• Beschikbare stuurdruk: _____ bar

Hydraulisch

• Beschikbare stuurdruk: _____ bar

Positionering:

Bovengronds

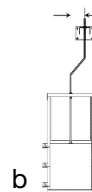
Ondergronds

Direct bevestigd op afsluiter

Bevestigd op de afsluiter

Optioneel met afstand (b):

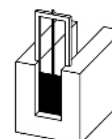
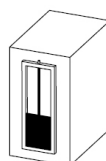
_____ mm



8 Uitvoering dichting

4-zijdig

3-zijdig



9 Spindel

Ontwerp:

In verhoogd kader (a)

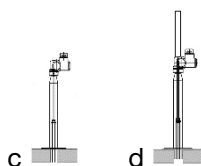
Modulaire opbouw (b)



Spindel:

Stijgend (c)

Niet-stijgend (d)



Standaanduiding:

Mechanisch

Elektrisch:

Inductief

Mechanisch

Opmerkingen: